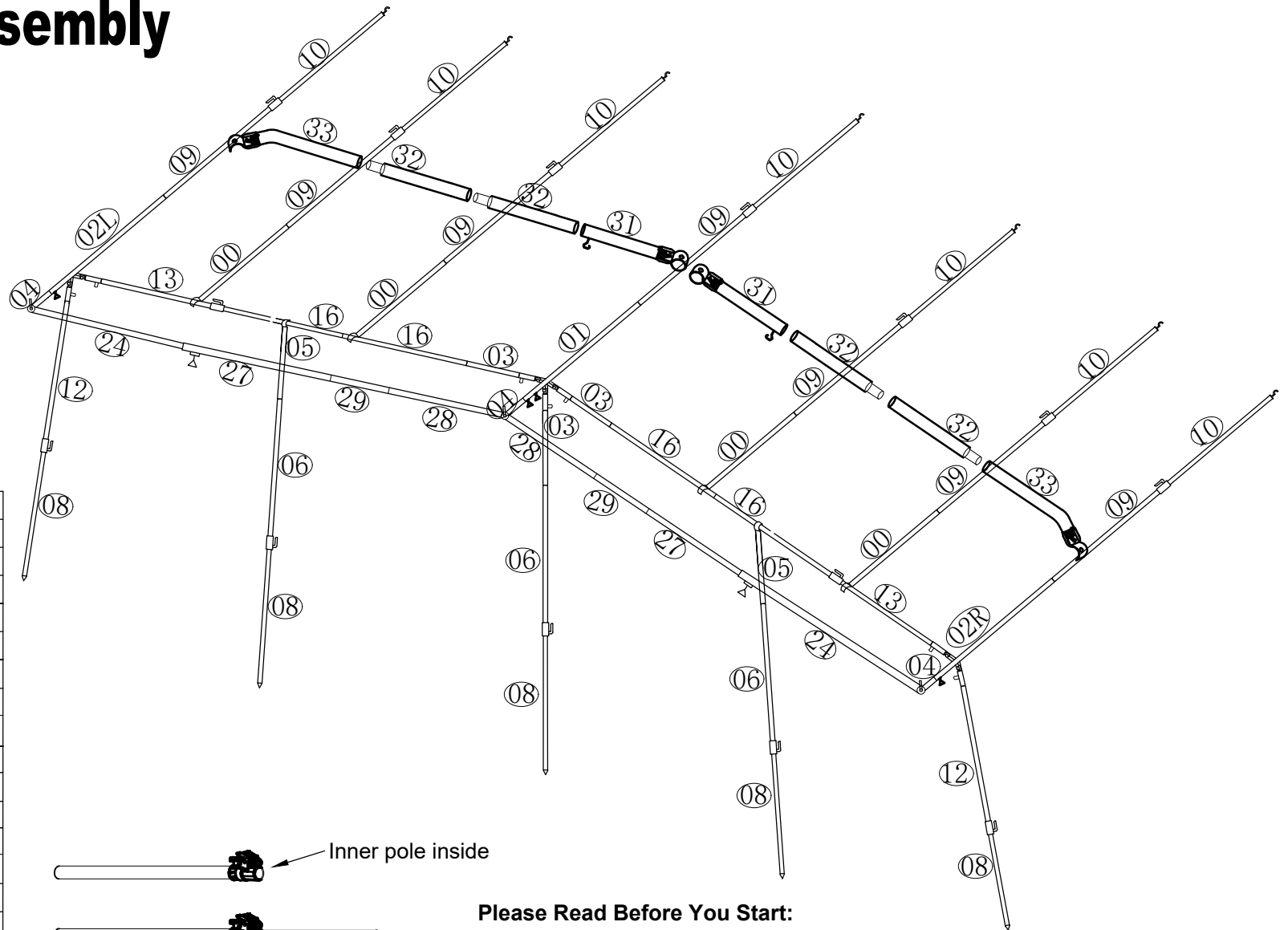


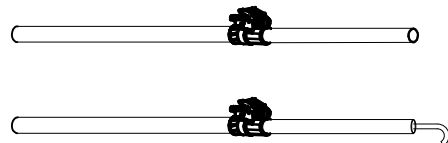
# Frame Assembly

## 20-22



00	∅25*1000mm	4
01	∅25*1200mm	1
02	∅25*1200mm	2
03	∅25*450mm	3
04	∅22*200mm	3
05	∅25*450mm	2
06	∅25*1000mm	3
08	∅22*1000mm	5
09	∅22*1150mm	7
10	∅22*1150mm	7
12	∅25*1000mm	2
13	∅22*1000mm	2
16	∅25*1200mm	4
24	∅19*1200mm	2
27	∅22*1200mm	2
28	∅22*1000mm	2
31	∅22*1200mm	2
32	∅19*900mm	4
33	∅19*1200mm	2
29	∅22*450mm	2

Inner pole inside



### Please Read Before You Start:

Poles are pre-inserted into the poles with Griploc clamps.  
 Before erecting the frame, fully open all Griploc clamps.  
 Turn the pole so that the Griploc clamp end is pointing downwards.  
 This will release the pole inside.